

# AVAILABLE FOR LEASE

## 3046 Redlands Avenue

PERRIS, CALIFORNIA 92571



### 301,411 SF Industrial Building



For more Information, please contact:

**TAL SIGLAR, CCIM**

909.942.4680

[tal.siglar@cushwake.com](mailto:tal.siglar@cushwake.com)

License 01229412

**DANIEL WAHL**

909.942.4651

[daniel.wahl@cushwake.com](mailto:daniel.wahl@cushwake.com)

License 02053165

**DAVE STASSEL**

909.260.1968

[david.stassel@aspectrep.com](mailto:david.stassel@aspectrep.com)

License 00954587

**DON ARCHER**

714.235.8131

[darcher@naicapital.com](mailto:darcher@naicapital.com)

License 01393449

Proudly Owned by a Joint Venture Between

**LAKE CREEK INDUSTRIAL LLC**



# AVAILABLE FOR LEASE

## 3046 Redlands Avenue

PERRIS, CALIFORNIA 92571

### 301,411 SF Industrial Building

#### BUILDING FEATURES



301,411 SF Buildings



8,620 SF Deluxe Office Area



40' Minimum Clear Height



ESFR Sprinkler System (K-25@45 psi)



1,200 Amps (4,000 UGPS)



LED Warehouse Lights



38 Dock High Doors (9'x10')



1 Ground Level Doors (12'X14')



60'x56' Column Spacing



121 Auto Parking Stalls



2% Acrylic Dome Skylight



164 Trailer Stalls



Up to 419' Secured & Gated Concrete Truck Court



White Scrim Ceiling Foil



Proudly Owned by a Joint Venture Between

**LAKE CREEK INDUSTRIAL LLC**



**TAL SIGLAR, CCIM**

909.942.4680

tal.siglar@cushwake.com

License 01229412

**DANIEL WAHL**

909.942.4651

daniel.wahl@cushwake.com

License 02053165

**DAVE STASSEL**

909.260.1968

david.stassel@aspectrep.com

License 00954587

**DON ARCHER**

714.235.8131

darcher@naicapital.com

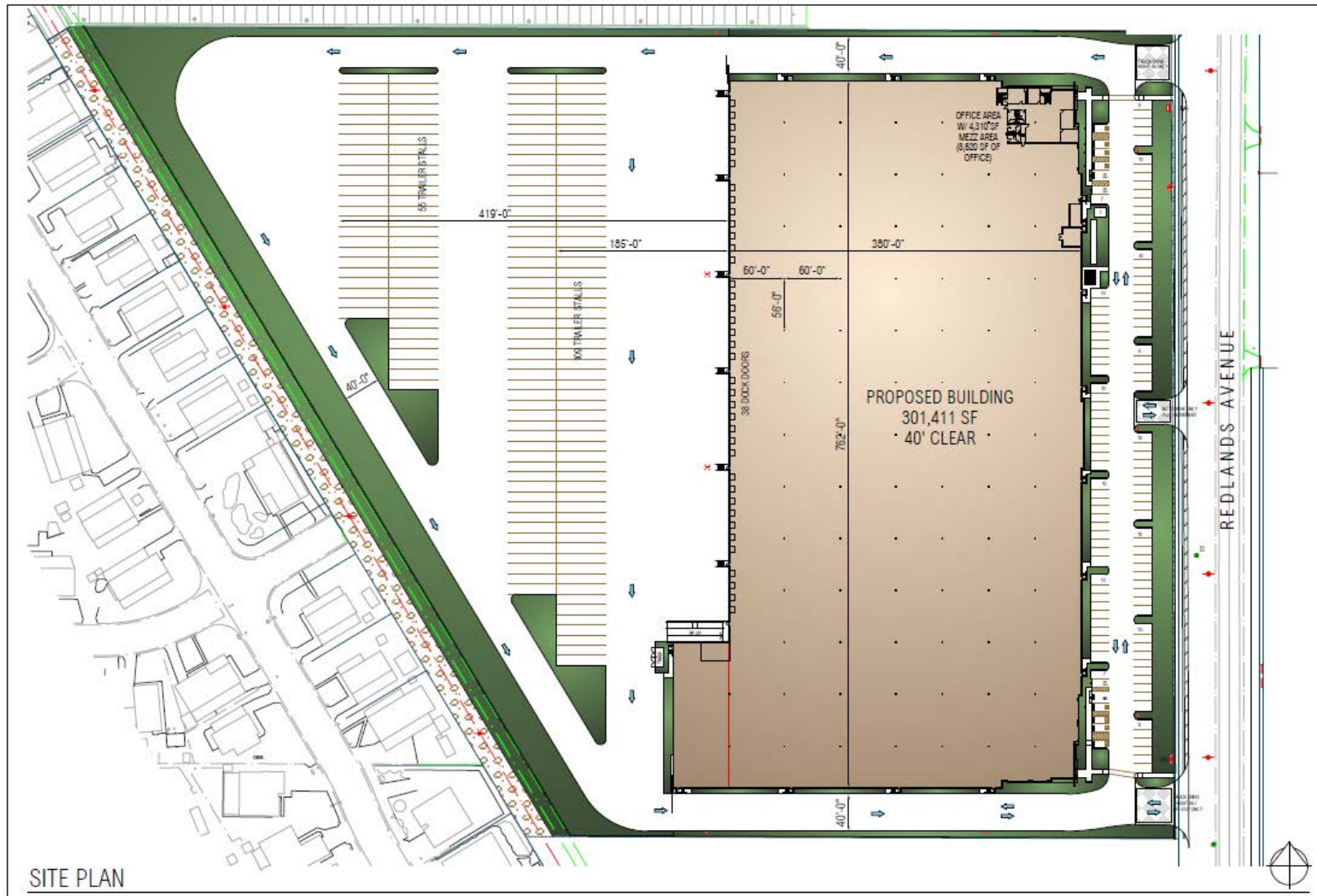
License 01393449

# AVAILABLE FOR LEASE

## 3046 Redlands Avenue

PERRIS, CALIFORNIA 92571

### SITE PLAN



SITE PLAN

Proudly Owned by a Joint Venture Between

**LAKE CREEK INDUSTRIAL LLC**



**TAL SIGLAR, CCIM**

909.942.4680

[tal.siglar@cushwake.com](mailto:tal.siglar@cushwake.com)

License 01229412

**DANIEL WAHL**

909.942.4651

[daniel.wahl@cushwake.com](mailto:daniel.wahl@cushwake.com)

License 02053165

**DAVE STASSEL**

909.260.1968

[david.stassel@aspectrep.com](mailto:david.stassel@aspectrep.com)

License 00954587

**DON ARCHER**

714.235.8131

[darcher@naicapital.com](mailto:darcher@naicapital.com)

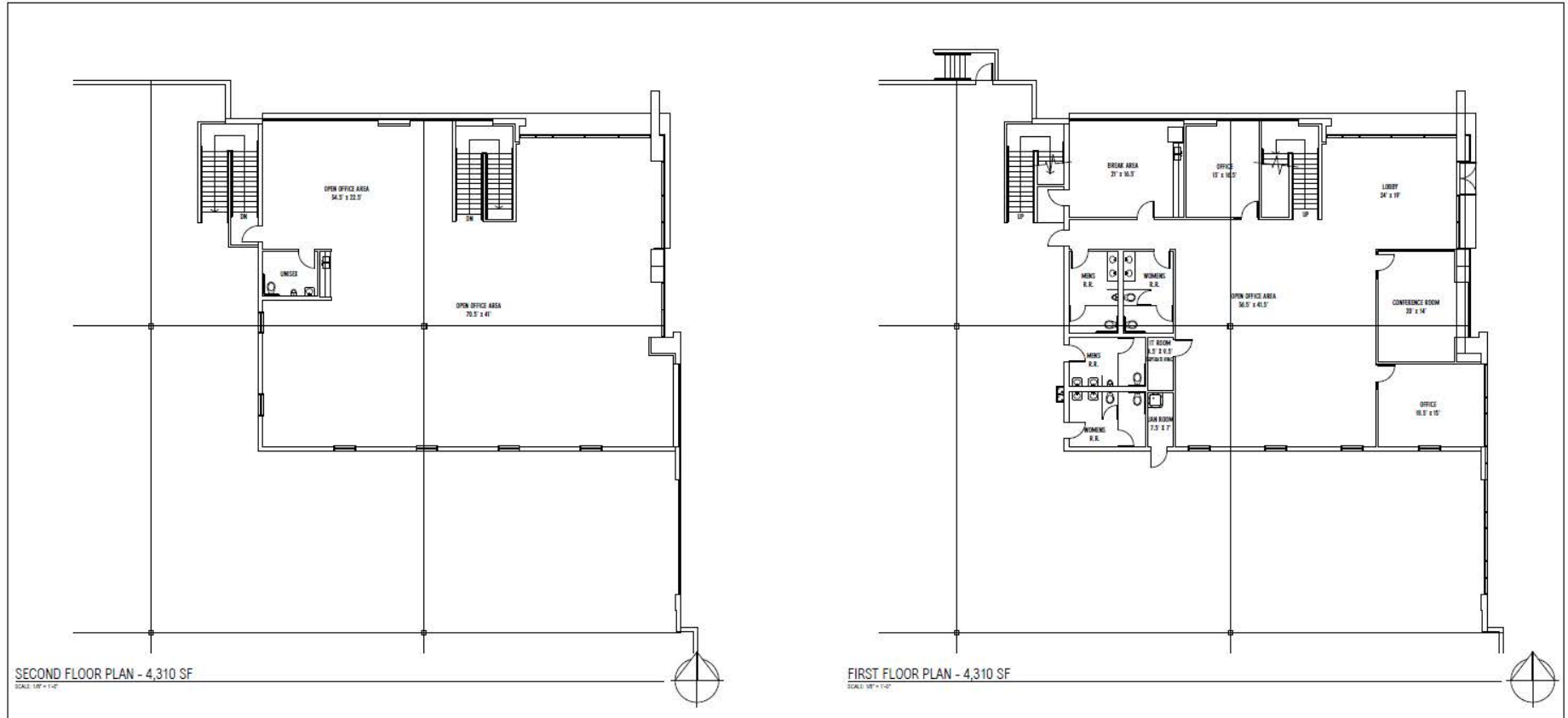
License 01393449

# AVAILABLE FOR LEASE

## 3046 Redlands Avenue

PERRIS, CALIFORNIA 92571

### OFFICE PLAN



Proudly Owned by a Joint Venture Between

**LAKE CREEK INDUSTRIAL LLC**



**TAL SIGLAR, CCIM**

909.942.4680

tal.siglar@cushwake.com

License 01229412

**DANIEL WAHL**

909.942.4651

daniel.wahl@cushwake.com

License 02053165

**DAVE STASSEL**

909.260.1968

david.stassel@aspectrep.com

License 00954587

**DON ARCHER**

714.235.8131

darcher@naicapital.com

License 01393449

# AVAILABLE FOR LEASE

## 3046 Redlands Avenue

PERRIS, CALIFORNIA 92571

### SURROUNDING PROJECTS



Proudly Owned by a Joint Venture Between

**LAKE CREEK INDUSTRIAL LLC**



**TAL SIGLAR, CCIM**

909.942.4680

[tal.siglar@cushwake.com](mailto:tal.siglar@cushwake.com)

License 01229412

**DANIEL WAHL**

909.942.4651

[daniel.wahl@cushwake.com](mailto:daniel.wahl@cushwake.com)

License 02053165

**DAVE STASSEL**

909.260.1968

[david.stassel@aspectrep.com](mailto:david.stassel@aspectrep.com)

License 00954587

**DON ARCHER**

714.235.8131

[darcher@naicapital.com](mailto:darcher@naicapital.com)

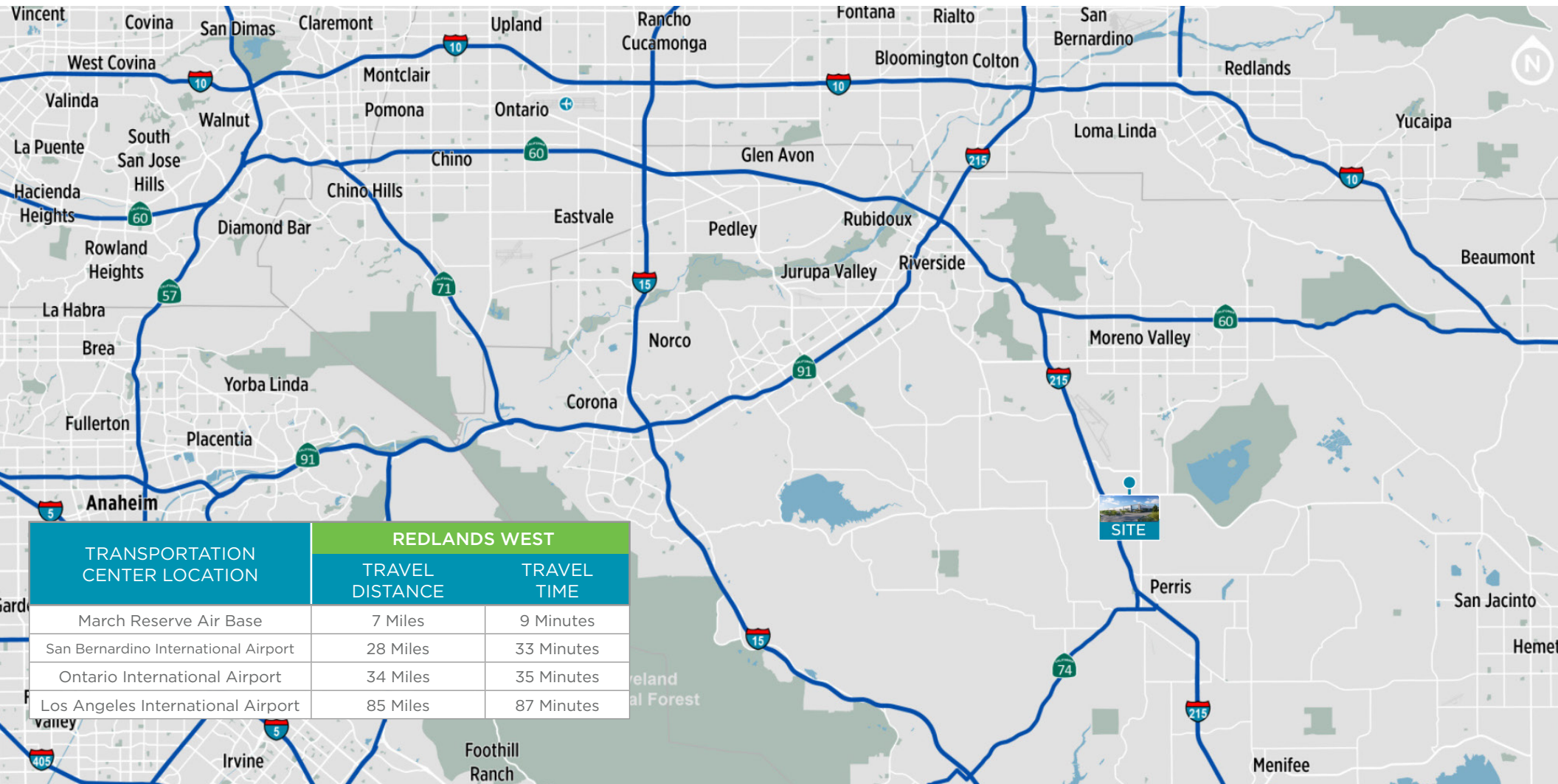
License 01393449

# AVAILABLE FOR LEASE

## 3046 Redlands Avenue

PERRIS, CALIFORNIA 92571

### 301,411 SF Industrial Building



Proudly Owned by a Joint Venture Between

**LAKE CREEK INDUSTRIAL LLC**



**TAL SIGLAR, CCIM**

909.942.4680  
tal.siglar@cushwake.com  
License 01229412

**DANIEL WAHL**

909.942.4651  
daniel.wahl@cushwake.com  
License 02053165

**DAVE STASSEL**

909.260.1968  
david.stassel@aspectrep.com  
License 00954587

**DON ARCHER**

714.235.8131  
darcher@naicapital.com  
License 01393449

# AVAILABLE FOR LEASE

## 3046 Redlands Avenue

PERRIS, CALIFORNIA 92571

### 301,411 SF Industrial Building



#### Corporate Neighbors

1	NewAge Products	11	Star Milling Company
2	IDC Logistics	12	FedEx Freight
3	Sketchers	13	NFI Industries
4	Wayfair	14	American Standard
5	Inland Empire Truss	15	JM Eagle
6	GPA Logistics	16	KPower Global Logistics
7	J&B Materials	17	National Archives
8	Lecangs	18	Genesis Supreme RV
9	Ritchie Bros Auctioneers	19	Home Depot
10	El Dorado Stone	20	Zodiac Pool Systems
		21	Builders First Source
		22	Ross Stores
		23	Wayfair
		24	Building Material Distributors
		25	NFI Industries
		26	Whirlpool Corporation
		27	Kenco Group
		28	Lowe's Home Improvement

Proudly Owned by a Joint Venture Between

**LAKE CREEK INDUSTRIAL LLC**



**TAL SIGLAR, CCIM**

909.942.4680

tal.siglar@cushwake.com

License 01229412

**DANIEL WAHL**

909.942.4651

daniel.wahl@cushwake.com

License 02053165

**DAVE STASSEL**

909.260.1968

david.stassel@aspectrep.com

License 00954587

**DON ARCHER**

714.235.8131

darcher@naicapital.com

License 01393449



Proudly Owned by a Joint Venture Between

**LAKE CREEK INDUSTRIAL LLC**



**TAL SIGLAR, CCIM**

909.942.4680

[tal.siglar@cushwake.com](mailto:tal.siglar@cushwake.com)

License 01229412

**DANIEL WAHL**

909.942.4651

[daniel.wahl@cushwake.com](mailto:daniel.wahl@cushwake.com)

License 02053165

**DAVE STASSEL**

909.260.1968

[david.stassel@aspectrep.com](mailto:david.stassel@aspectrep.com)

License 00954587

**DON ARCHER**

714.235.8131

[darcher@naicapital.com](mailto:darcher@naicapital.com)

License 01393449