

# AVAILABLE FOR LEASE

## 3045 Redlands Avenue

PERRIS, CALIFORNIA 92571



### 254,750 SF Industrial Building

For more Information, please contact:



**TAL SIGLAR, CCIM**  
909.942.4680  
tal.siglar@cushwake.com  
License 01229412

**DANIEL WAHL**  
909.942.4651  
daniel.wahl@cushwake.com  
License 02053165

Proudly Owned by a Joint Venture Between

**LAKE CREEK INDUSTRIAL LLC**



# AVAILABLE FOR LEASE

## 3045 Redlands Avenue

PERRIS, CALIFORNIA 92571

### 254,750 SF Industrial Building

#### BUILDING FEATURES



254,750 SF Buildings



31 Dock High Doors (9'x10')



8,620 SF Deluxe Office Area



2 Ground Level Doors (12'X14')



40' Minimum Clear Height



60'x56' Column Spacing



ESFR Sprinkler System (K-25@45 psi)



101 Auto Parking Stalls



1,200 Amps (4,000 UGPS)



2% Acrylic Dome Skylight



LED Warehouse Lights



47 Trailer Stalls



185' Secured & Gated Concrete Truck Court



White Scrim Ceiling Foil



**TAL SIGLAR, CCIM**  
909.942.4680  
tal.siglar@cushwake.com  
License 01229412

**DANIEL WAHL**  
909.942.4651  
daniel.wahl@cushwake.com  
License 02053165

Proudly Owned by a Joint Venture Between

**LAKE CREEK INDUSTRIAL LLC**

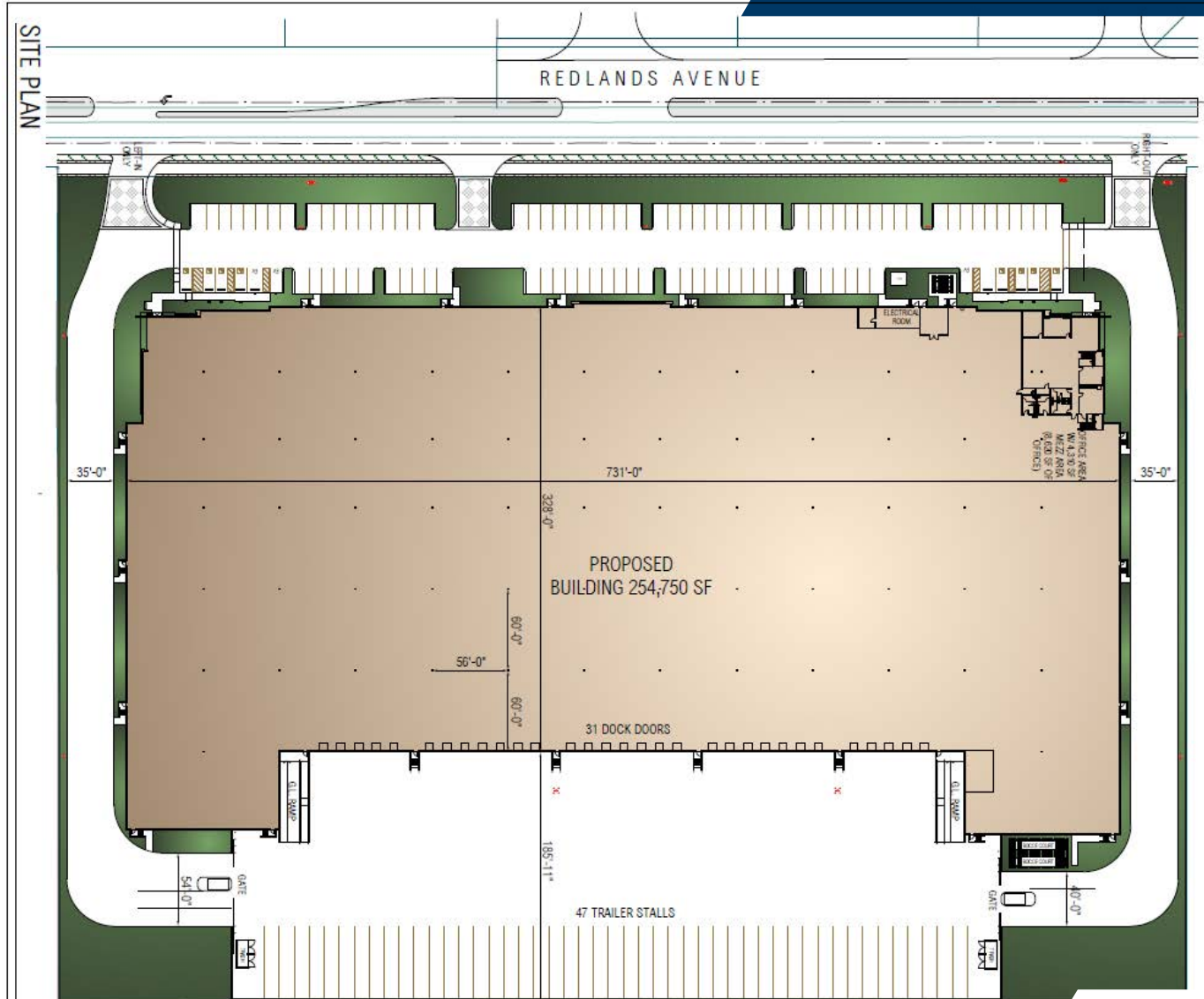


# AVAILABLE FOR LEASE

## 3045 Redlands Avenue

PERRIS, CALIFORNIA 92571

### SITE PLAN



**TAL SIGLAR, CCIM**  
909.942.4680  
tal.siglar@cushwake.com  
License 01229412

**DANIEL WAHL**  
909.942.4651  
daniel.wahl@cushwake.com  
License 02053165

Proudly Owned by a Joint Venture Between

**LAKE CREEK INDUSTRIAL LLC**

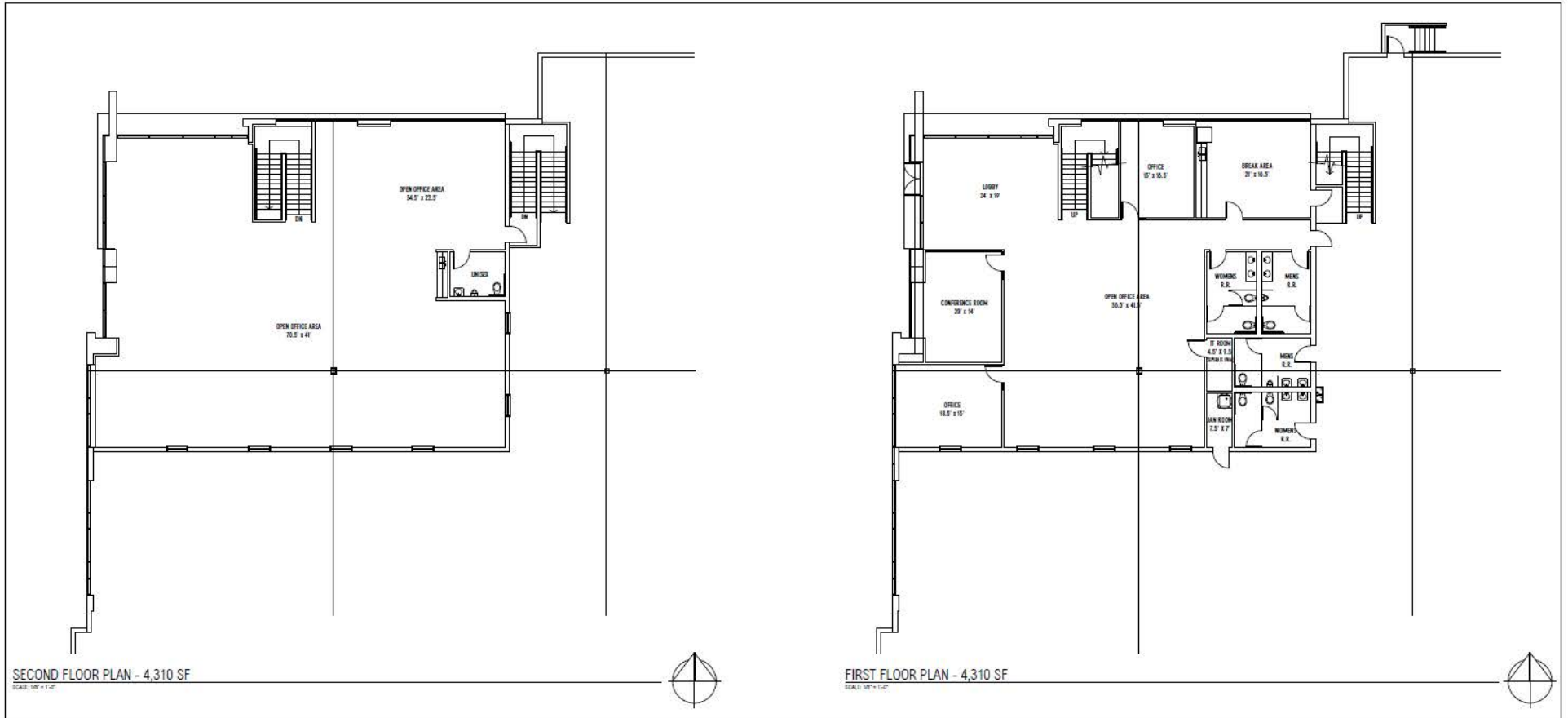


# AVAILABLE FOR LEASE

## 3045 Redlands Avenue

PERRIS, CALIFORNIA 92571

## OFFICE PLAN



**TAL SIGLAR, CCIM**  
909.942.4680  
tal.siglar@cushwake.com  
License 01229412

**DANIEL WAHL**  
909.942.4651  
daniel.wahl@cushwake.com  
License 02053165

Proudly Owned by a Joint Venture Between

**LAKE CREEK INDUSTRIAL LLC**



# AVAILABLE FOR LEASE

## 3045 Redlands Avenue

PERRIS, CALIFORNIA 92571

## SURROUNDING PROJECTS



**TAL SIGLAR, CCIM**  
909.942.4680  
tal.siglar@cushwake.com  
License 01229412

**DANIEL WAHL**  
909.942.4651  
daniel.wahl@cushwake.com  
License 02053165

Proudly Owned by a Joint Venture Between

**LAKE CREEK INDUSTRIAL LLC**



# AVAILABLE FOR LEASE

## 3045 Redlands Avenue

PERRIS, CALIFORNIA 92571

### 254,750 SF Industrial Building



**TAL SIGLAR, CCIM**  
909.942.4680  
tal.siglar@cushwake.com  
License 01229412

**DANIEL WAHL**  
909.942.4651  
daniel.wahl@cushwake.com  
License 02053165

Proudly Owned by a Joint Venture Between

**LAKE CREEK INDUSTRIAL LLC**



# AVAILABLE FOR LEASE

## 3045 Redlands Avenue

PERRIS, CALIFORNIA 92571

### 254,750 SF Industrial Building

**Corporate Neighbors**

1	NewAge Products	11	Star Milling Company
2	IDC Logistics	12	FedEx Freight
3	Sketchers	13	NFI Industries
4	Wayfair	14	American Standard
5	Inland Empire Truss	15	JM Eagle
6	GPA Logistics	16	KPower Global Logistics
7	J&B Materials	17	National Archives
8	Lecangs	18	Genesis Supreme RV
9	Ritchie Bros Auctioneers	19	Home Depot
10	El Dorado Stone	20	Zodiac Pool Systems
		21	Builders First Source
		22	Ross Stores
		23	Wayfair
		24	Building Material Distributors
		25	NFI Industries
		26	Whirlpool Corporation
		27	Kenco Group
		28	Lowe's Home Improvement



**TAL SIGLAR, CCIM**  
909.942.4680  
tal.siglar@cushwake.com  
License 01229412

**DANIEL WAHL**  
909.942.4651  
daniel.wahl@cushwake.com  
License 02053165

Proudly Owned by a Joint Venture Between

**LAKE CREEK INDUSTRIAL LLC**





**TAL SIGLAR, CCIM**  
909.942.4680  
tal.siglar@cushwake.com  
License 01229412

**DANIEL WAHL**  
909.942.4651  
daniel.wahl@cushwake.com  
License 02053165

Proudly Owned by a Joint Venture Between



©2022 Cushman & Wakefield. All rights reserved. The information contained in this communication is strictly confidential. This information has been obtained from sources believed to be reliable but has not been verified. NO WARRANTY OR REPRESENTATION, EXPRESS OR IMPLIED, IS MADE AS TO THE CONDITION OF THE PROPERTY (OR PROPERTIES) REFERENCED HEREIN OR AS TO THE ACCURACY OR COMPLETENESS OF THE INFORMATION CONTAINED HEREIN, AND SAME IS SUBMITTED SUBJECT TO ERRORS, OMISSIONS, CHANGE OF PRICE, RENTAL OR OTHER CONDITIONS, WITHDRAWAL WITHOUT NOTICE, AND TO ANY SPECIAL LISTING CONDITIONS IMPOSED BY THE PROPERTY OWNER(S). ANY PROJECTIONS, OPINIONS OR ESTIMATES ARE SUBJECT TO UNCERTAINTY AND DO NOT SIGNIFY CURRENT OR FUTURE PROPERTY PERFORMANCE.