

12122 WOODRUFF AVE, DOWNEY, CA 90241

2.5 ACRE **INDUSTRIAL** YARD WITH 74 TRAILER STALLS

TRUCKING USES APPROVED | AVAILABLE NOW



Owned By:



LAKE CREEK INDUSTRIAL LLC

Exclusive
Listing Agent:



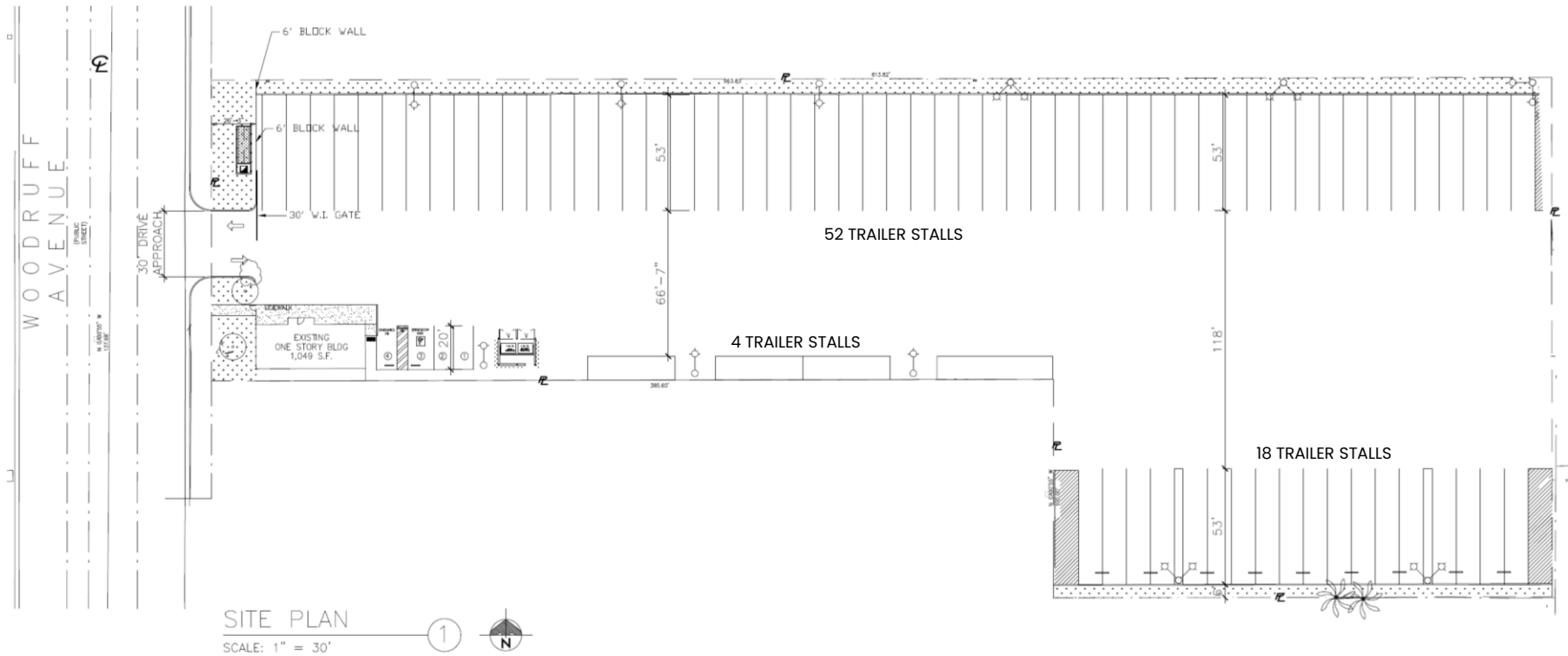
Mark Repstad | Principal
T: 213.338.8000 xl
mark@southlandcre.com
License ID: 01492673

INDUSTRIAL IOS

Southland Commercial Real Estate
251 S Lake Ave, Ste. 800 | Pasadena, CA 91101
T: 213.338.8000 | License ID: 02154676
www.southlandcre.com

12122 WOODRUFF AVE, DOWNEY, CA 90241

2.5 ACRE **IOS** YARD WITH 74 TRAILER STALLS | TRUCKING USES APPROVED | AVAILABLE NOW



- BRAND NEW 2.5 ACRE **IOS** YARD | PAVED, FENCED, LIT
- 1 BLOCK FROM NEW PROLOGIS TRUCK TERMINAL
- 1,049 SF OFFICE/GUARD SHACK AT ENTRY | M1/M2, CITY OF DOWNEY ZONE
- 15 MILES TO PORTS OF LONG BEACH AND LOS ANGELES

Exclusive Listing Agent: Mark Repstad | Principal
mark@southlandcre.com
T: 213.338.8000 x1



LAKE CREEK INDUSTRIAL LLC

INDUSTRIAL **IOS**

12122 WOODRUFF AVE, DOWNEY, CA 90241

2.5 ACRE **IOS** YARD WITH 74 TRAILER STALLS | TRUCKING USES APPROVED | AVAILABLE NOW



WOODRUFF AVE

12122 WOODRUFF AVE, DOWNEY, CA 90241

2.5 ACRE **IOS** YARD WITH 74 TRAILER STALLS | TRUCKING USES APPROVED | AVAILABLE NOW



NEW 70 DH TRUCK TERMINAL ON 6.31 AC
(NOT A PART)

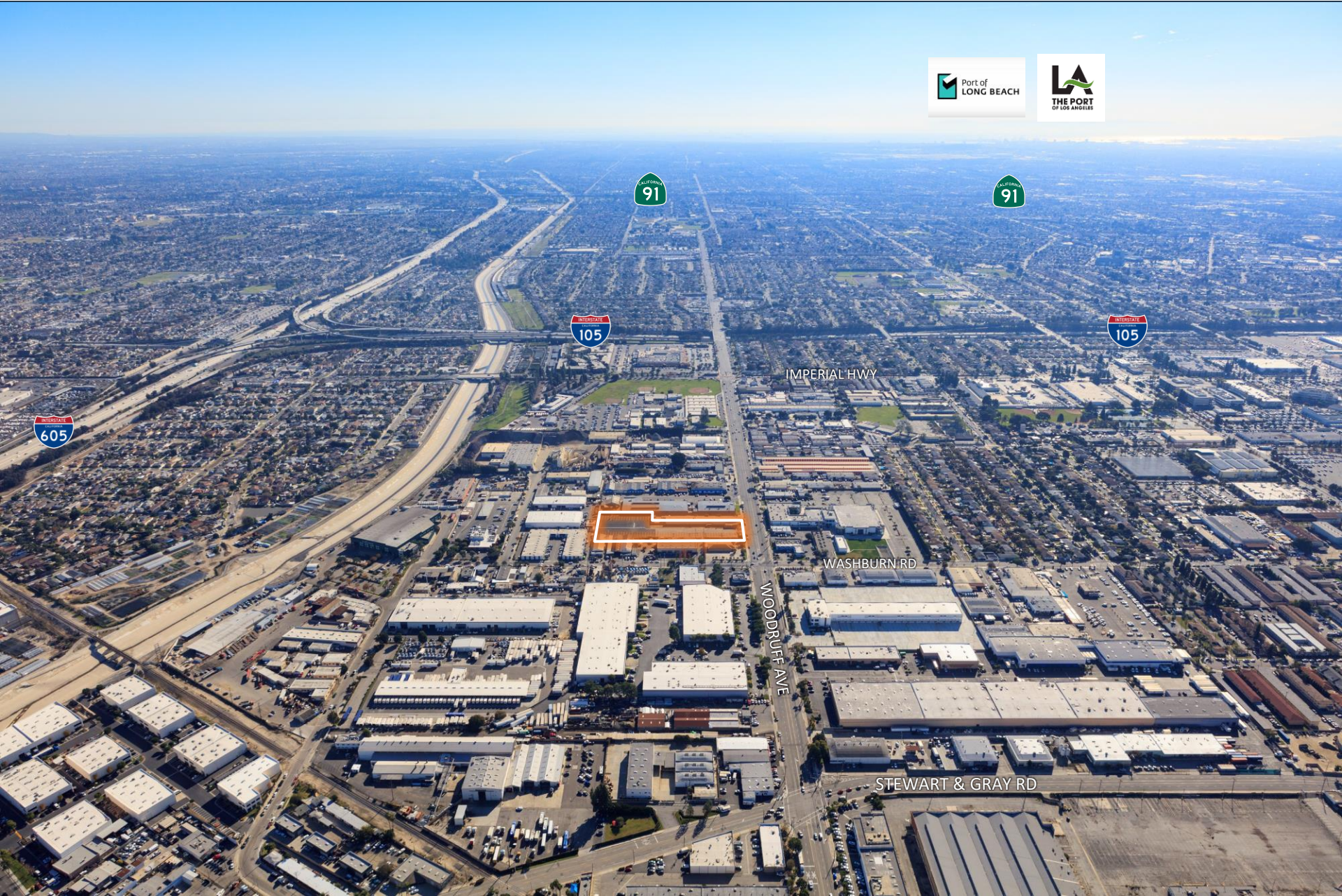


WOODRUFF AVE

WASHBURN RD

12122 WOODRUFF AVE, DOWNEY, CA 90241

2.5 ACRE **IOS** YARD WITH 74 TRAILER STALLS | TRUCKING USES APPROVED | AVAILABLE NOW



IMPERIAL HWY

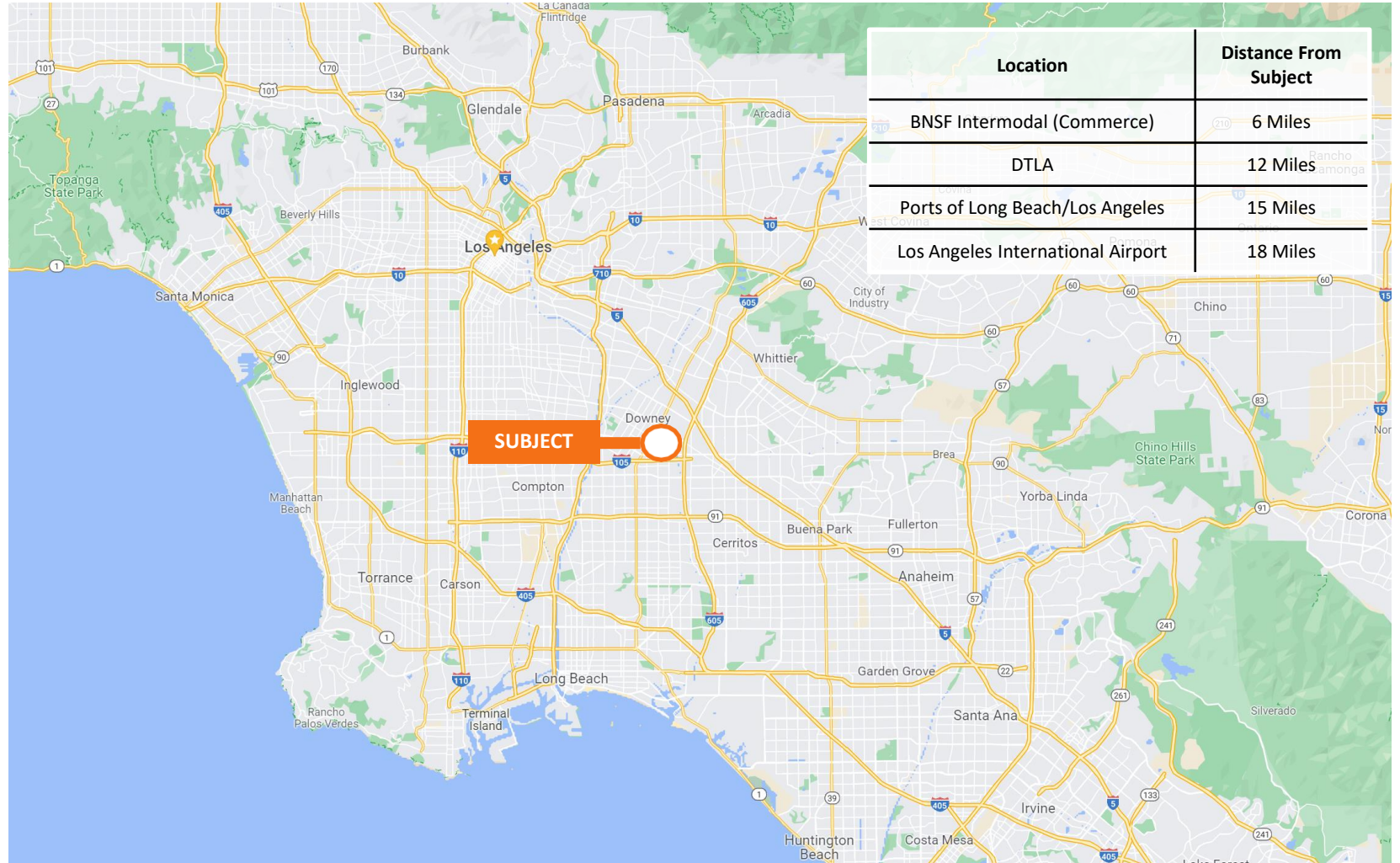
WASHBURN RD

WOODRUFF AVE

STEWART & GRAY RD

12122 WOODRUFF AVE, DOWNEY, CA 90241

2.5 ACRE **IOS** YARD WITH 74 TRAILER STALLS | TRUCKING USES APPROVED | AVAILABLE NOW



LAKE CREEK INDUSTRIAL LLC

Exclusive Listing Agent:

Mark Repstad | Principal
T: 213.338.8000 x1
mark@southlandcre.com

INDUSTRIAL IOS

Corporate License ID: 02154676
The information contained herein has been obtained from sources deemed reliable but has not been verified and no guarantee, warranty or representation, either express or implied, is made with respect to such information. Terms of sale or lease and availability are subject to change or withdrawal without notice.